

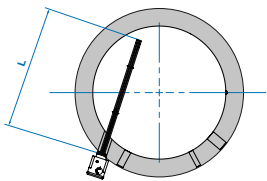
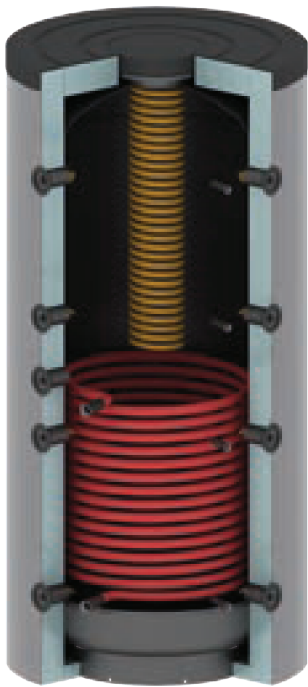
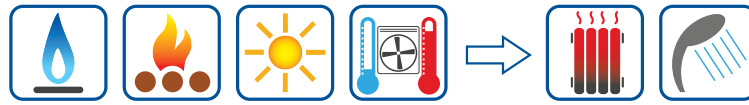
# ZETA

## Combined tank type "Pipe in Tank"



100 150 200 300 400 500 600 750 800 1000 1250 1500 2000 2500 3000 4000 5000

Combined tanks for DHW production and accumulation of heating water.



### Max. length heating element

Model	L (mm)
300	450
400	550
500	550
600	620
800	720
1000	720
1250	850
1500	900
2000	950

### Main features

<b>Material</b>	Carbon steel	
<b>External treatment</b>	600-2000	Rustproof paint
<b>Internal treatment</b>	Raw	
<b>Maximum working pressure</b>	Tank	3 bar
<b>Maximum working temperature</b>	Tank	95 °C
<b>Maximum working pressure</b>	Exchangers	10 bar
<b>Maximum working temperature</b>	Exchangers	110 °C
<b>DHW exchanger</b>	Copper (single finned tube)	
<b>Exchange surface</b>	Hot water exchanger	4.54 m <sup>2</sup>
<b>Capacity</b>	Hot water exchanger	4.2 l
<b>Maximum working pressure</b>	Hot water exchanger	10 bar
<b>Maximum working temperature</b>	Hot water exchanger	110 °C
<b>Hydraulic connections</b>	Hot water exchanger	¾"
<b>Guarantee</b>	Tank	5 years

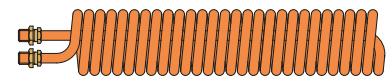
### Accessories

 **Thermometer**  
Complete of ½" sensor sleeve

 **Sensor sleeve**  
Threaded connection ½"

 **Flexible connection pipe kit**  
Threaded connections 1"½

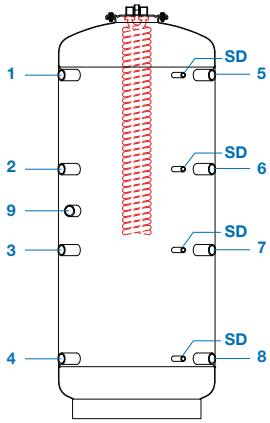
 **Heating element**  
Threaded connection 1"½



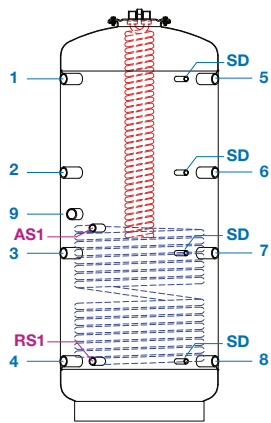
Primary		DHW exchanger			
T (°C)	Capacity (l/h)	ΔT (°C)	Capacity (l/h)	ΔP (bar)	Power (kW)
50	2000	25 (15-40)	928	0.40	27
50	2000	30 (15-45)	773	0.27	27
50	3300	25 (15-40)	1444	0.92	42
50	3300	30 (15-45)	1191	0.62	42
60	1000	30 (15-45)	814	0.38	28
60	1000	40 (15-55)	611	0.25	28
70	1000	30 (15-45)	1453	0.90	51
70	1000	40 (15-55)	1096	0.54	51
80	1000	30 (15-45)	1800	1.25	63
80	1000	40 (15-55)	1354	0.80	63

Model	Version	Insulation	Efficiency class	Dispersion	Lower exchanger R1 / R2	Upper exchanger R2	M	R1	R2	
			UE 812/2013	(W)	(m <sup>2</sup> )	(m <sup>2</sup> )	(kg)	(kg)	(kg)	
ZETA	300	M / R1	PU 50mm + PVC	B	68	1.2	-	80	96	-
ZETA	400	M / R1	PU 50mm + PVC	C	78	1.5	-	92	117	-
ZETA	500	M / R1 / R2	PU 50mm + PVC	C	92	1.8	1.2	102	126	150
ZETA	600	M / R1 / R2	Polyester 100mm + PVC	C	113	1.8	1.2	102	125	152
ZETA	800	M / R1 / R2	Polyester 100mm + PVC	C	117	2.4	1.8	114	145	166
ZETA	1000	M / R1 / R2	Polyester 100mm + PVC	C	144	3.0	2.4	134	172	204
ZETA	1250	M / R1 / R2	Polyester 100mm + PVC	C	157	3.0	2.4	159	199	231
ZETA	1500	M / R1 / R2	Polyester 100mm + PVC	C	170	3.6	2.4	178	224	255
ZETA	2000	M / R1 / R2	Polyester 100mm + PVC	D	204	4.2	3.0	244	295	333

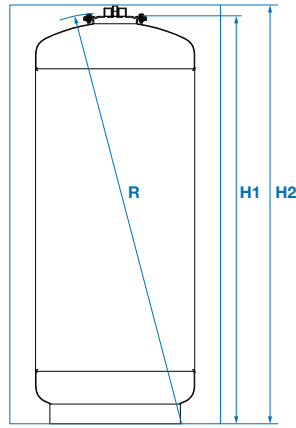
### ZETA - M



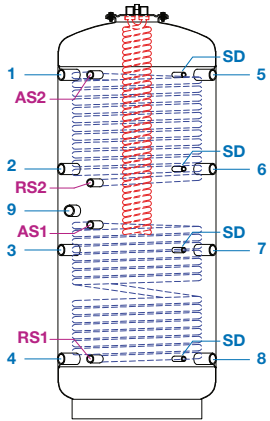
### ZETA - R1



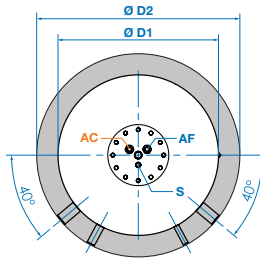
### Dimension



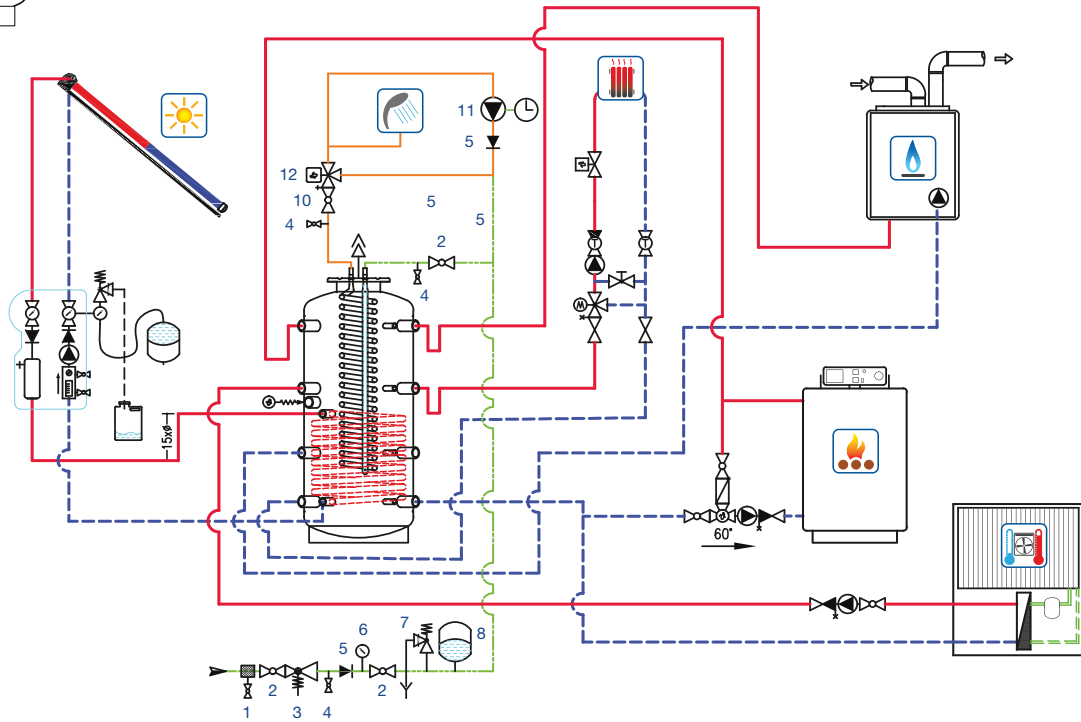
### ZETA - R2



### Dimension



Legend		
1	Wood boiler flow	1" ½
2	Flow heat pump	1" ½
3	Gas, fuel or pellet boiler return	1" ½
4	Heating system return	1" ½
5	Gas, fuel or pellet boiler flow	1" ½
6	Heating system flow	1" ½
7	Free	1" ½
8	Return heat pump, log boiler	1" ½
9	Heating element	1" ½
S	Vent or safety valve	½"
SD	Sensor	½"
RS1	Solar return	1"
RS2	Solar return	1"
AS1	Flow return	1"
AS2	Flow return	1"
AF	Cold water inlet	¾"
AC	Hot water outlet	¾"
Ø D1	Diameter without insulation	
Ø D2	Diameter with insulation	
R	Topple height	
H1	Height without insulation	
H2	Height with insulation	



Model	1-5	2-6	3-7	4-8	9	RS1	AS1	RS2	AS2	Ø D1	Ø D2	R	H1	H2
300	1110	835	460	210	720	210	660	-	-	550	650	1505	1378	1380
400	1121	817	514	211	707	211	656	-	-	650	750	1577	1406	1410
500	1381	971	651	211	821	211	721	-	-	650	750	1801	1656	1660
600	1394	994	594	224	804	224	724	994	1344	700	900	1715	1630	1700
800	1426	1026	626	256	866	256	801	1026	1386	790	990	1765	1673	1760
1000	1720	1249	844	300	1040	300	970	1180	1720	790	990	2115	2028	2090
1250	1700	1239	784	300	1085	300	970	1160	1700	950	1150	2115	2006	2060
1500	1750	1285	900	350	1128	350	1000	1240	1750	1000	1200	2235	2139	2200
2000	2025	1489	959	325	1214	325	1105	1475	2025	1100	1300	2480	2368	2420