

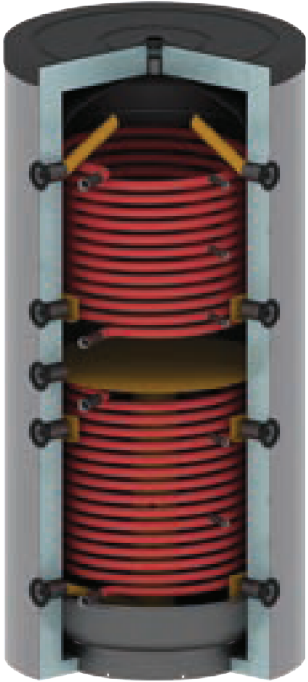
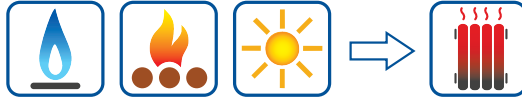
# ALFA

## Stratified buffer tanks



100 150 200 300 400 **500** 600 750 **800** **1000** **1250** **1500** **2000** 2500 3000 4000 5000

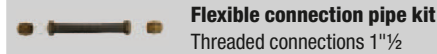
Stratified tanks for heating water accumulation.



### Main features

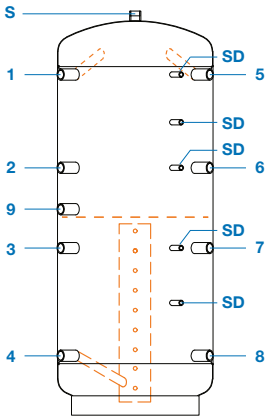
<b>Material</b>	Carbon steel	
<b>External treatment</b>	Rustproof paint	
<b>Internal treatment</b>	Raw	
<b>Maximum working pressure</b>	Tank	3 bar
<b>Maximum working temperature</b>	Tank	95 °C
<b>Maximum working pressure</b>	Exchangers	10 bar
<b>Maximum working temperature</b>	Exchangers	110 °C
<b>Guarantee</b>	Tank	5 years

### Accessories

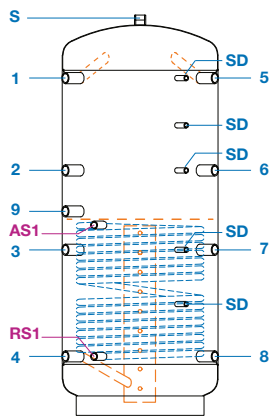


Model	Version	Insulation	Efficiency class	Dispersion	Lower exchanger		Upper exchanger		Weight	
					R1 / R2	R2	M	R1	R2	
			UE 812/2013	(W)	(m <sup>2</sup> )	(m <sup>2</sup> )	(kg)	(kg)	(kg)	
ALFA	500	M / R1 / R2	PU 50mm + PVC	C	92	1.8	1.2	90	114	131
ALFA	800	M / R1 / R2	Polyester 100mm + PVC	C	117	2.4	1.8	112	145	169
ALFA	1000	M / R1 / R2	Polyester 100mm + PVC	C	144	3.0	2.4	132	170	204
ALFA	1250	M / R1 / R2	Polyester 100mm + PVC	C	157	3.0	2.4	162	205	240
ALFA	1500	M / R1 / R2	Polyester 100mm + PVC	C	170	3.6	2.4	182	225	254
ALFA	2000	M / R1 / R2	Polyester 100mm + PVC	D	204	4.2	3.0	244	303	342

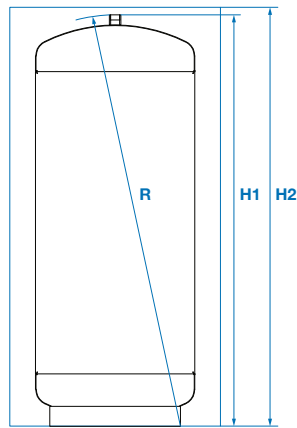
### ALFA - M



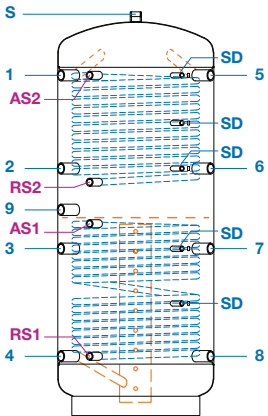
### ALFA - R1



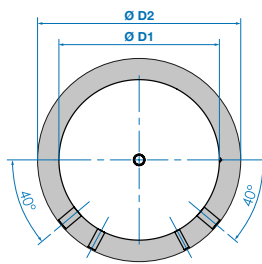
### Dimension



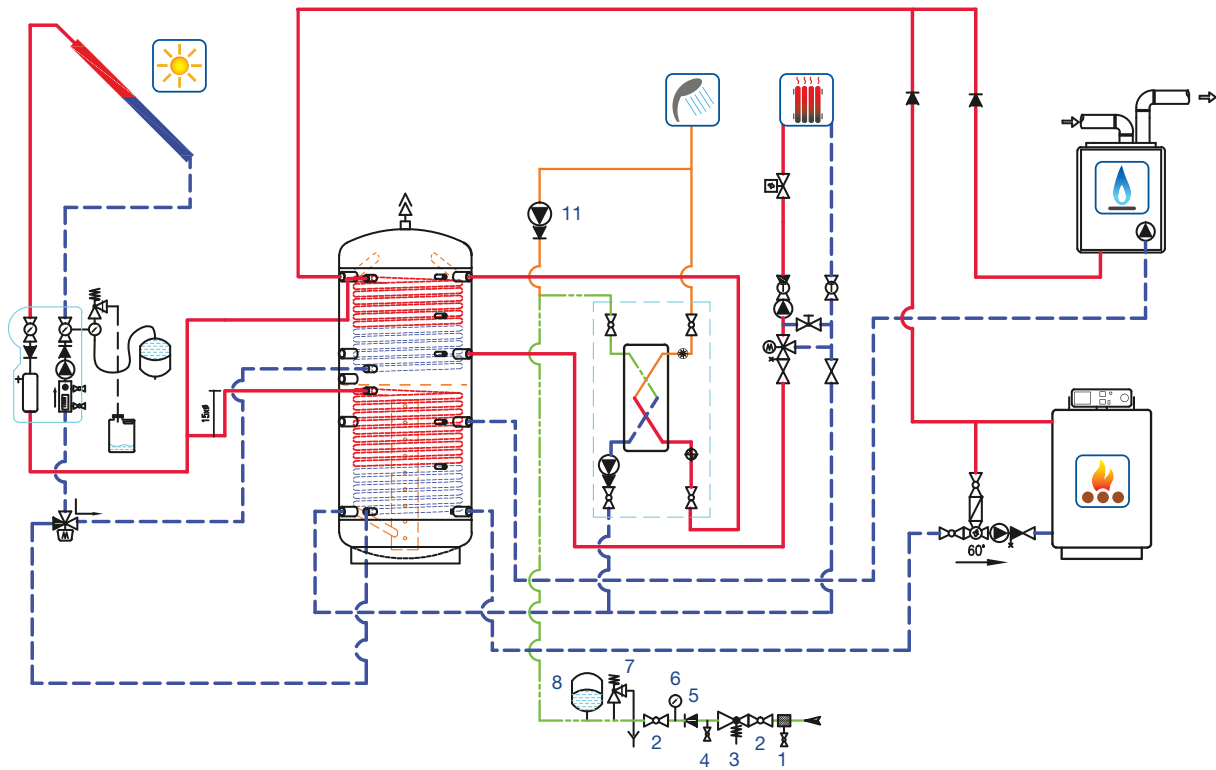
### ALFA - R2



### Dimension



Legend		
1	Boiler flow	1" ½
2	Free	1" ½
3	Free	1" ½
4	Heating return	1" ½
5	Heating flow high temperature	1" ½
6	Heating flow low temperature	1" ½
7	Gas, fuel or pellet boiler return	1" ½
8	Wood boiler return	1" ½
9	Heating element	1" ½
S	Vent or safety valve	1" ½
SD	Sensor	½"
RS1	Solar return	1"
RS2	Solar return	1"
AS1	Solar flow	1"
AS2	Solar flow	1"
Ø D1	Diameter without insulation	
Ø D2	Diameter with insulation	
R	Topple height	
H1	Height without insulation	
H2	Height with insulation	



Model	1-5	2-6	3-7	4-8	9	RS1	AS1	RS2	AS2	Ø D1	Ø D2	R	H1	H2
500	1381	971	651	211	821	211	721	981	1381	650	750	1801	1621	1630
800	1426	1026	626	256	866	256	801	1026	1386	790	990	1740	1686	1760
1000	1720	1249	844	300	1040	300	970	1180	1720	790	990	2090	2041	2090
1250	1700	1239	784	300	1085	300	970	1160	1700	950	1150	2090	2017	2060
1500	1750	1285	900	350	1128	350	1000	1240	1750	1000	1200	2215	2152	2200
2000	2025	1489	959	325	1214	325	1105	1475	2025	1100	1300	2450	2377	2420