

# PS BIG TANK

Big dimension buffer tank



6000

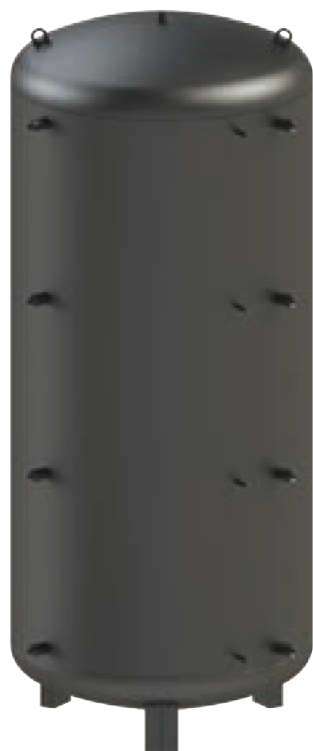
7000

8000

9000

10000

12000



Tanks for heating water



## Main features

<b>Material</b>	Carbon steel	
<b>External treatment</b>	Rustproof paint	
<b>Internal treatment</b>	Raw	
<b>Maximum working pressure</b>	Tank	3/6 bar
<b>Maximum working temperature</b>	Tank	95 °C
<b>Guarantee</b>	Tank	5 years

## Accessories



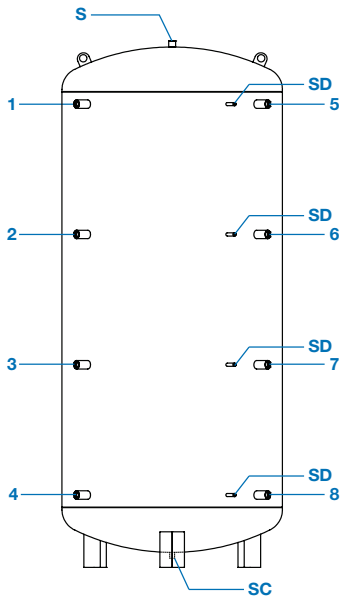
**Thermometer**  
Complete of ½" sensor sleeve



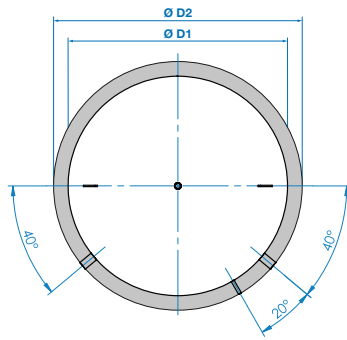
**Sensor sleeve**  
Threaded connection ½"

Model	Ø D1	Ø D2	Version	Insulation
<b>PS BIG TANK 16 6000</b>	1600	1850	Vertical / Horizontal	PU foam 125mm + PVC
<b>PS BIG TANK 18 6000</b>	1800	2050	Vertical / Horizontal	PU foam 125mm + PVC
<b>PS BIG TANK 16 7000</b>	1600	1850	Vertical / Horizontal	PU foam 125mm + PVC
<b>PS BIG TANK 18 7000</b>	1800	2050	Vertical / Horizontal	PU foam 125mm + PVC
<b>PS BIG TANK 16 8000</b>	1600	1850	Vertical / Horizontal	PU foam 125mm + PVC
<b>PS BIG TANK 18 8000</b>	1800	2050	Vertical / Horizontal	PU foam 125mm + PVC
<b>PS BIG TANK 16 9000</b>	1600	1850	Vertical / Horizontal	PU foam 125mm + PVC
<b>PS BIG TANK 18 9000</b>	1800	2050	Vertical / Horizontal	PU foam 125mm + PVC
<b>PS BIG TANK 16 10000</b>	1600	1850	Vertical / Horizontal	PU foam 125mm + PVC
<b>PS BIG TANK 18 10000</b>	1800	2050	Vertical / Horizontal	PU foam 125mm + PVC
<b>PS BIG TANK 18 12000</b>	1800	2050	Vertical / Horizontal	PU foam 125mm + PVC

## PS BIG TANK

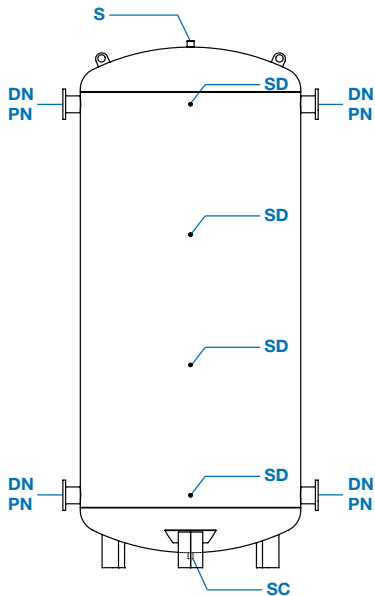


## Dimension

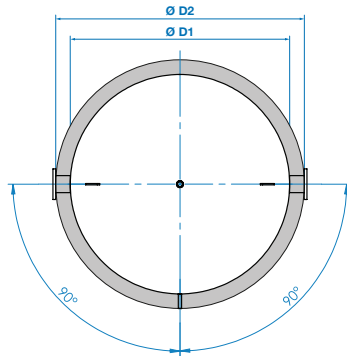


Legend		
1	Hydraulic connection	2"
2	Hydraulic connection	2"
3	Hydraulic connection	2"
4	Hydraulic connection	2"
5	Hydraulic connection	2"
6	Hydraulic connection	2"
7	Hydraulic connection	2"
8	Hydraulic connection	2"
SC	Drainage	1" ½
S	Vent or safety valve	1" ½
SD	Sensor	½"
Ø D1	Diameter without insulation	
Ø D2	Diameter with insulation	
R	Topple height	
H1	Height without insulation	
H2	Height with insulation	

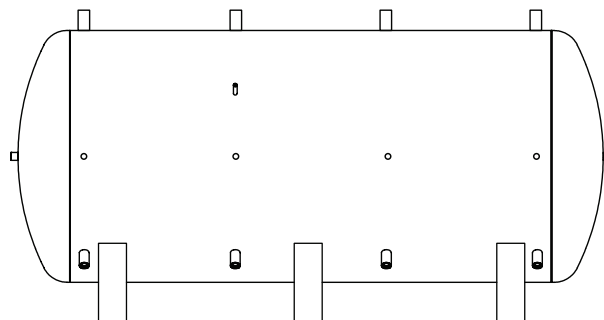
## PS BIG TANK - DN FLANGE



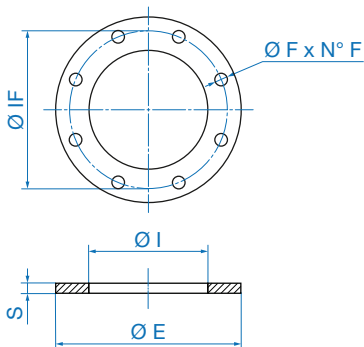
## Dimension



## PS BIG TANK - HORIZONTAL



On customer request are executed special tanks with DN / PN flanges



Flange DN/PN size

Flange type	Ø E (mm)	Ø I (mm)	S (mm)	IF (mm)	Ø F (mm)	N° F
DN 20 PN 6	90	27.5	14	65	11	4
DN 25 PN 6	100	34.5	14	75	11	4
DN 32 PN 6	120	43.5	16	90	14	4
DN 40 PN 6	130	49.5	16	100	14	4
DN 50 PN 6	140	61.5	16	110	14	4
DN 65 PN 6	160	77.5	16	130	14	4
DN 80 PN 6	190	90.5	18	150	18	4
DN 100 PN 6	210	116.0	18	170	18	4
DN 125 PN 6	240	141.5	20	200	18	8
DN 150 PN 6	265	170.5	20	225	18	8
DN 200 PN 6	320	221.5	22	280	18	8
DN 250 PN 6	375	276.5	24	335	18	12
DN 300 PN 6	440	327.5	24	395	22	12

Flange type	Ø E (mm)	Ø I (mm)	S (mm)	IF (mm)	Ø F (mm)	N° F
DN 20 PN 16	105	27.5	16	75	14	4
DN 25 PN 16	115	34.5	16	85	14	4
DN 32 PN 16	140	43.5	18	100	18	4
DN 40 PN 16	150	49.5	18	110	18	4
DN 50 PN 16	165	61.5	19	125	18	4
DN 65 PN 16	185	77.5	20	145	18	8
DN 80 PN 16	200	90.5	20	160	18	8
DN 100 PN 16	220	116.0	22	180	18	8
DN 125 PN 16	250	141.5	22	210	18	8
DN 150 PN 16	285	170.5	24	240	22	8
DN 200 PN 16	340	221.5	26	295	22	12
DN 250 PN 16	405	276.5	29	355	26	12
DN 300 PN 16	460	327.5	32	410	26	12