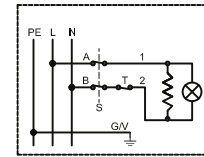
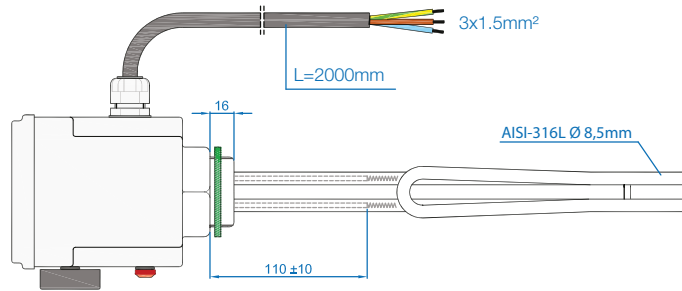
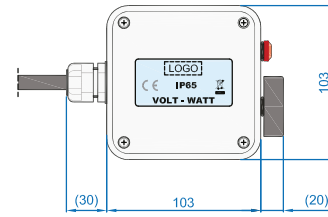
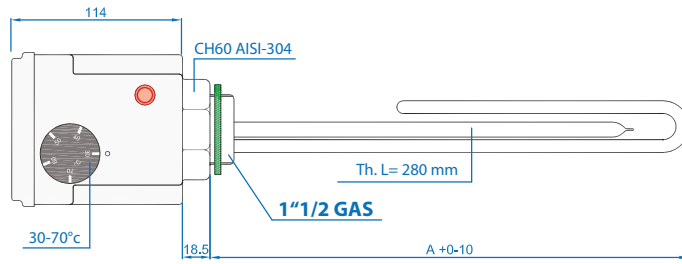
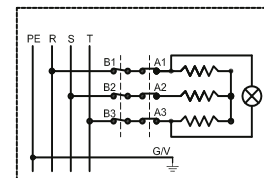
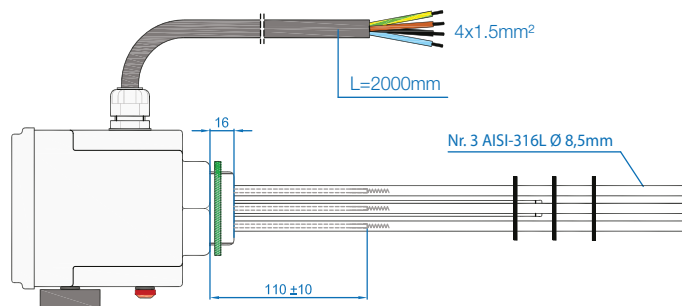
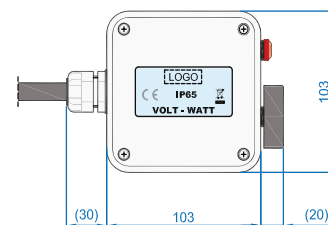
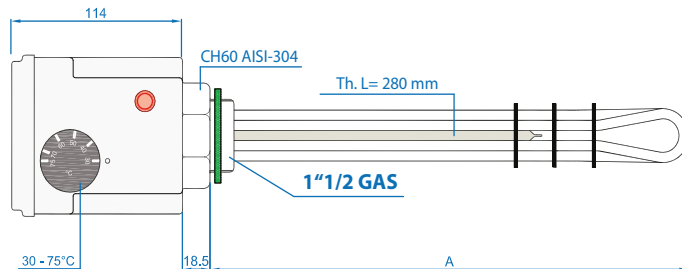


# HEATING ELEMENTS



## SINGLE-PHASE HEATING ELEMENT

Power (kW)	Voltage (V)	Length A (mm)	Cold part (mm)	Thermoregulation (°C)	Security (°C)	Specific power (W/cm²)	Max. specific load (W/cm²)	Protection
1.5	230	320	110	30-70	90	5.2	13	IP 65
2.0	230	320	110	30-70	90	7.0	13	IP 65
2.5	230	320	110	30-70	90	7.7	13	IP 65
3.0	230	320	110	30-70	90	8.8	13	IP 65
4.5	230	480	110	30-70	90	10.5	13	IP 65



## THREE-PHASE HEATING ELEMENT

Power (kW)	Voltage (V)	Length A (mm)	cold part (mm)	Thermoregulation (°C)	Security (°C)	Specific power (W/cm²)	Max. specific load (W/cm²)	Protection
3.0	400	300	110	30-75	98	9.5	13	IP 65
4.5	400	450	110	30-75	98	9.3	13	IP 65
6.0	400	600	110	30-75	98	9.0	13	IP 65
9.0	400	700	110	30-75	98	11.2	13	IP 65
12.0	400	850	110	30-75	98	12.2	13	IP 65